



VPI RUBBER FLOORING
*Surfacing
Everywhere®*

When you only want the best, we'll be there.

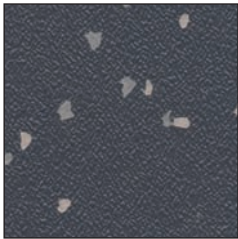


Better Products. Better Service.

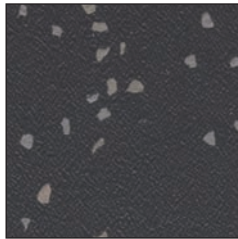
VPI Rubber Flooring. A product with the kind of agility you need to bring your unique interior designs to life and enough muscle to tackle the most daunting applications. Abrasion and slip resistant. Flexible and easy to install. Low-noise compliant with a level of endurance that assures your creative vision will last a lifetime. We have it all,

including a palette of styles, colors and patterns that combine unhindered creativity and outstanding functionality. Meeting stringent specifications that exceed industry norms. Quality control check points throughout each phase of production. These are the reasons you have made the right choice.

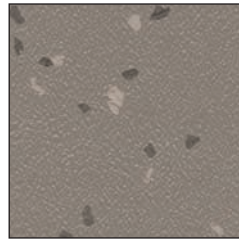
Decorative Rolled Flooring



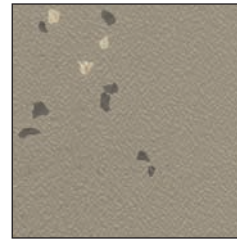
MIXED GRAPHITE 802



BURNT SIENNA 803



THICK FOG 804



QUARTZITE 805



SPOTTED FAWN 807



HEAVENLY TAUPE 808



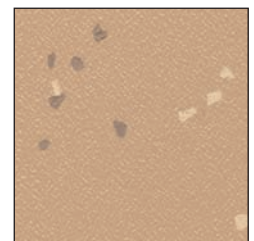
SANDY BEACH 809



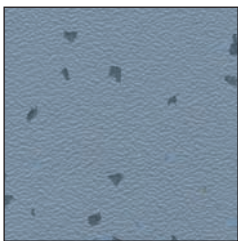
SOFT SAND 810



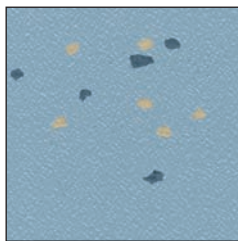
ROUGH BARK 811



SPICY BROWN 814



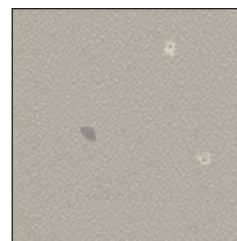
STARRY NIGHT 816



SPARKLING WATER 817



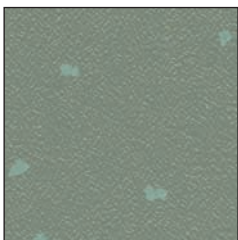
RAINY DAY 818



CLOUDY DAY 819



STONE RIDGE 820



SEAWEED 823



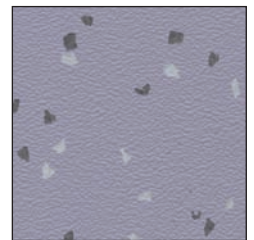
MISTY GREEN 825



SPRING DAY 826



SOFT SKIN 829

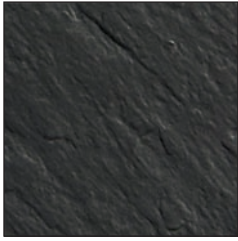


FRESH LILACS 831

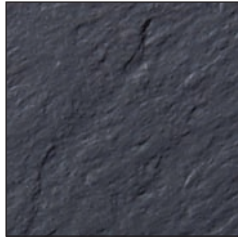
VPI Decorative Rolled Rubber Flooring is as easy on the eye as it is to install. With an array of calming color tones and patterns, you can address the critical application needs of sensitive medical spaces. And since there are less seams for bacteria and microbes to gather and grow, it's also a perfect choice for health care and day care applications. Our flooring is void of harmful asbestos, cadmium, CFCs, formaldehyde or halogens, so your designs can be accountable for more than being visually pleasing. In addition to the beauty comes the muscle, with 1200 psi load resistance. Comes in rolls approximately 60" x 50' and matching rubber welding bead is available.

Colors available in 2 mm and 3 mm.

Decorative Slate Flooring



DARTMOOR SHALE 02



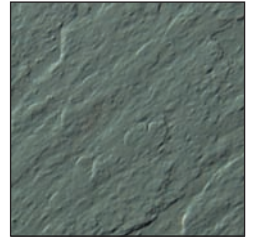
CHARCOAL SLATE 03



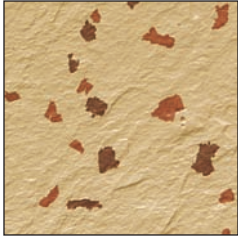
LONDON FOG 05



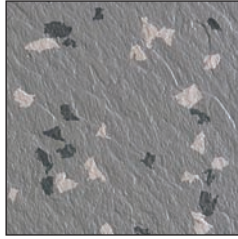
MOROCCAN BLUE 11



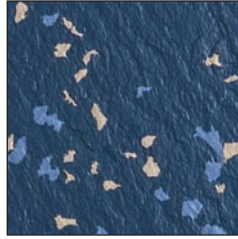
MARINER GREEN 34



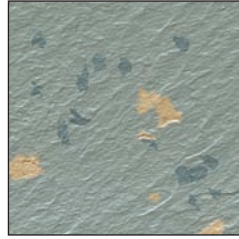
SAND OF ARABIA 700



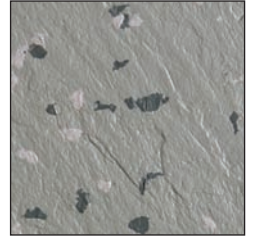
GRAY FLANNEL 701



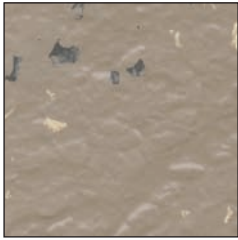
MYSTIC BLUE 702



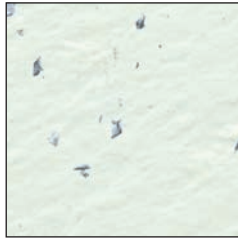
CELTIC BRUSH 705



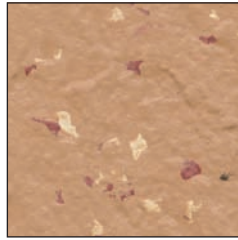
GRAY QUARTZ 706



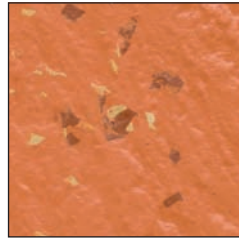
DESERT KHAKI 707



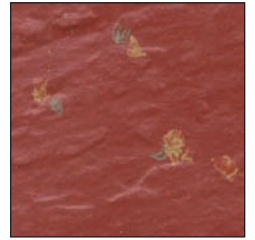
MILKWEED 709



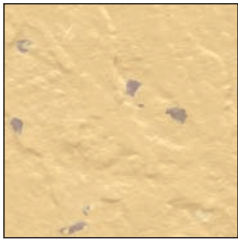
SANTA FE 710



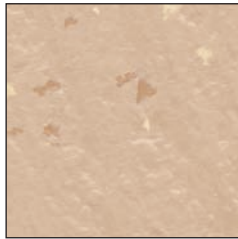
ORANGE BLOSSOM 720



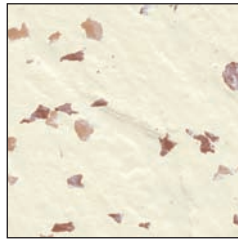
REDWOOD 721



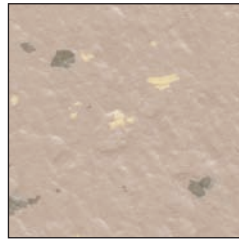
WINTER WHEAT 722



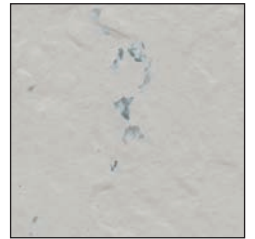
ROCKY ROAD 723



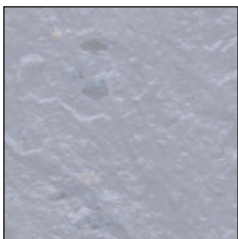
ALMOND BEIGE 724



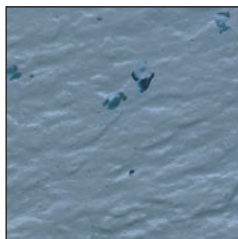
SMOKY BREEZE 725



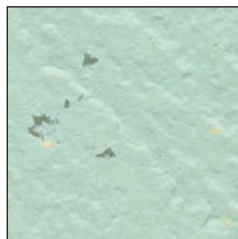
SEA MIST 726



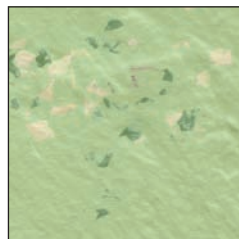
MISTY FALLS 728



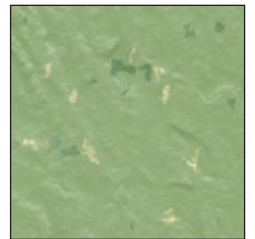
BLUE MOON 729



CALM SEA GREEN 730



CUCUMBER 731



SEA TURTLE 736

VPI Decorative Slate Flooring is the perfect choice for high-traffic walkways in healthcare, schools, offices and lobbies. With low-noise characteristics, fire resistance, and low-smoke density. Our ADA compliant rubber flooring gives you the performance you need while maintaining the design integrity you desire.

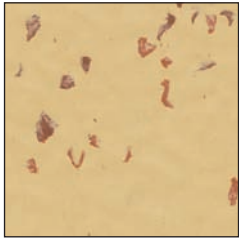
Slate  0.125" (3.17 mm)

Micro-Squared™
17³/₁₆" x 17³/₁₆" (452 mm x 452 mm)

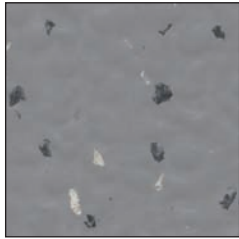
 35¹/₁₆" x 35¹/₁₆" (905 mm x 905 mm)



Decorative Hammered Flooring



SAND OF ARABIA 700



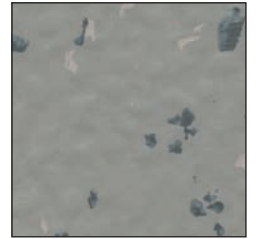
GRAY FLANNEL 701



MYSTIC BLUE 702



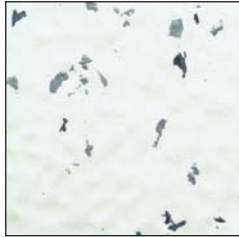
CELTIC BRUSH 705



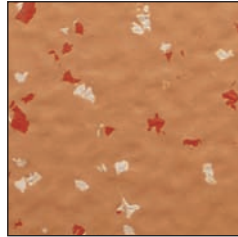
GRAY QUARTZ 706



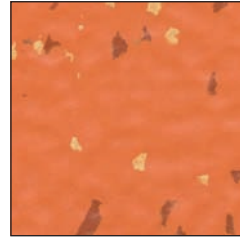
DESERT KHAKI 707



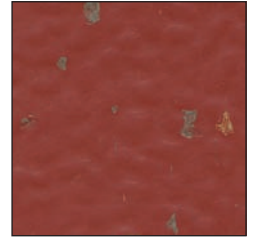
MILKWEED 709



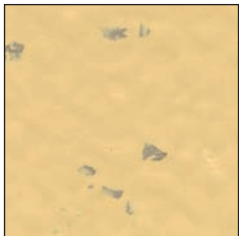
SANTA FE 710



ORANGE BLOSSOM 720



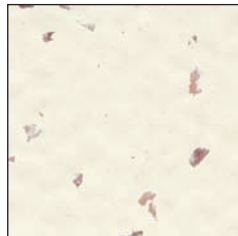
REDWOOD 721



WINTER WHEAT 722



ROCKY ROAD 723



ALMOND BEIGE 724



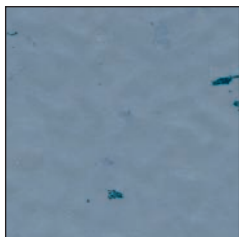
SMOKY BREEZE 725



SEA MIST 726



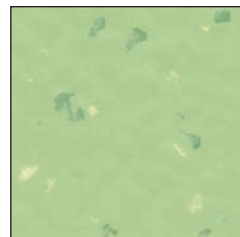
MISTY FALLS 728



BLUE MOON 729



CALM SEA GREEN 730



CUCUMBER 731



SEA TURTLE 736

VPI Decorative Hammered Flooring creates a current of ebb and flow that gives an environment a continuous distinctive style. Ideal for high rolling traffic areas like healthcare or education hallways and conference centers. Integral for smoke, fire and noise resistance. And a critical component for creative space fabrication. Get it all with VPI.

Hammered
 0.125" (3.17 mm)

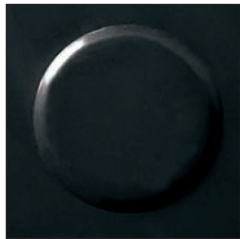
Micro-Squared™
 17³/₁₆" x 17³/₁₆" (452 mm x 452 mm)

35¹/₁₆" x 35¹/₁₆" (905 mm x 905 mm)


Note: Due to color variations in printing, please refer to actual samples for accurate color.



Classic Raised Round & Harsh Environment Flooring



JET 01



DARTMOOR SHALE 02



CHARCOAL SLATE 03



PEWTER 04



LONDON FOG 05



MOROCCAN BLUE 11



RUBY ROUGE 25



ROASTED CHESTNUT 39



SAND CASTLE 44



CAFÉ AU LAIT 48



FALL HARVEST 52



BURNT ORANGE 53



DOLPHIN BLUE 58



OLIVE GREEN 61



LIME GREEN 62



SEA GREEN 65

VPI Classic Raised Round Flooring offers perpetual motifs that complement even the most challenging interiors. With superior impact resistance, it's an excellent choice for high-traffic areas, including building entrances and exits. Offering the ultimate in resilience, VPI Harsh Environment Flooring is impervious to toxic chemicals, abrasions and grease, and includes enhanced safety properties. Now even the most foreboding interiors can become more inviting and striking.

Round

0.125" (3.17 mm)

Micro-Squared™
17³/₁₆" x 17³/₁₆" (452 mm x 452 mm)

35¹/₁₆" x 35¹/₁₆" (905 mm x 905 mm)

Harsh Environment

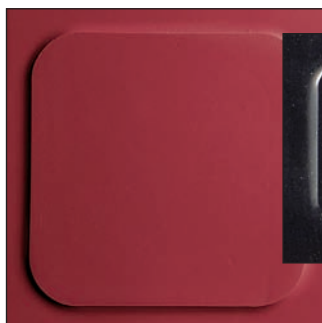
0.125" (3.17 mm)

Minimum production requirements apply for all Harsh Environment Flooring. Inquire for stock and availability.

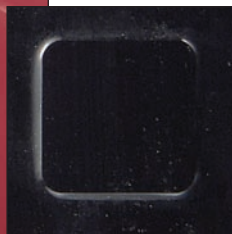
● **Super Match Colors** are color coordinated and available in rubber tile, rubber treads, wall base and accessories.

Specialty Flooring

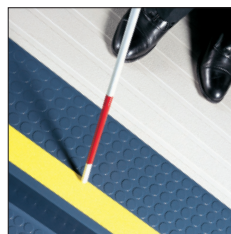
Special Order items have minimum production requirements, and are available in the same 16 colors as the Classic Raised Round Flooring. Ask your sales consultant for complete details.



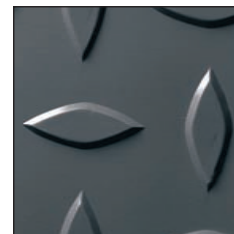
LARGE SQUARE
Special Order



CLASSIC RAISED SQUARE
Special Order



TACTILE
Special Order



DECK POINT
Special Order

Micro-Squared™
17³/₁₆" x 17³/₁₆"
(452 mm x 452 mm)

35¹/₁₆" x 35¹/₁₆"
(905 mm x 905 mm)

Square

0.125" (3.17 mm)

35¹/₁₆" x 35¹/₁₆" (905 mm x 905 mm)

Pattern height = 0.635 mm Overall Thickness = 3.17 mm

Tactile

0.125" (3.17 mm)

35¹/₁₆" x 35¹/₁₆" (905 mm x 905 mm)

Pattern height = 0.833 mm Overall Thickness = 3.17 mm

Deck Point

0.125" (3.17 mm)

35¹/₁₆" x 35¹/₁₆" (905 mm x 905 mm)

Pattern height = 1.03 mm Overall Thickness = 3.17 mm

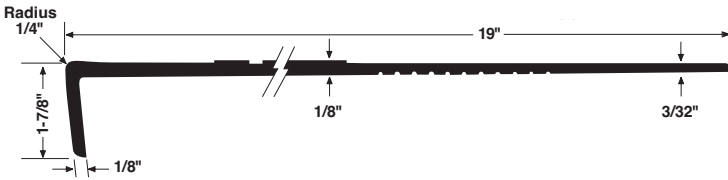
Rubber Stair Treads & Stringers/Risers

Treads available in 36", 48" or 72" size.

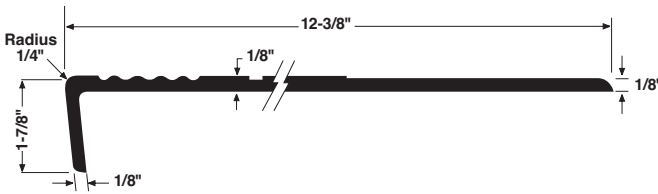
Stringers available in 24' rolls.

Decorative and Classic Stair Treads
Classic Stair Treads for Harsh Environments
 One Piece Tread/Riser Combination, Round Profile

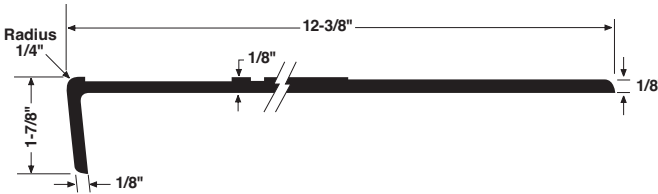
Stringer/Riser Combination



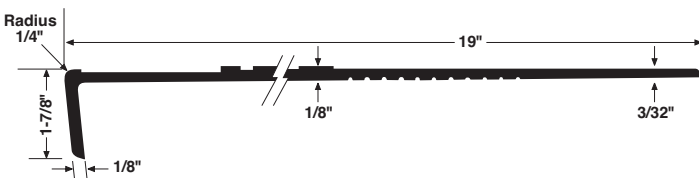
Decorative and Classic Stair Treads
 Regular, Round Profile or Regular, Square Profile**



Decorative and Classic Stair Treads for the Visually Impaired*
 Regular, Round Profile or Regular, Square Profile**



Decorative and Classic Stair Treads for the Visually Impaired*
Harsh Environment Stair Treads for the Visually Impaired*
 One Piece Tread/Riser Combination, Round Profile



*Carborendum Strip Colors: White, Glowing White, Yellow, Red or Jet.

** Minimum production requirements apply.



Our collection of accessories is color-coordinated with most VPI Rubber Flooring patterns. Simplify stairwell installations with a one-piece Stair Tread/Riser combination, or select from our large portfolio of regular stair treads. All accessories are available in the same 16 colors as the Classic Raised Round Flooring.

Just How Green is Green? VPI Goes to the Next Level

Our up-front focus on quality means our products are durable and tough, with a very long life cycle in their intended applications. The result? A diminished need to extract new resources and expend energy in the manufacture of replacement products.

It's certainly no surprise that environmental concerns have come to the forefront of virtually every aspect of modern life. At VPI, we remain committed to this important directive, and fully understand the role we play working in partnership with you.



When manufacturers tout the benefits of recycling, they often overlook the impact of the recycling process: Energy is consumed, waste is created, and additional resources are used. Granted, this process may use less energy and resources than creating new products, but an overall negative impact on the environment is often the result. **So while recycling is typically presented as an environmentally responsible practice, there's a bigger question: Isn't continued use of a high-quality product better than recycling?**

Preventing waste—not simply recycling waste—is the real solution to a healthy planet. Unlike many flooring products available today, our tile lasts decades, not just a few years. And that means replacement and recycling isn't required. Instead, we offer sustainability, a solution that makes sense from financial and environmental perspectives. Simply, our belief is that while recycling is better than throwing something away, the greenest solution is using a product that lasts and lasts.

Our Facility: Setting the Standard

- We generate almost no waste for landfills (less than 2%). All product trim and rework is reused within the product, other products, or used within other manufacturing processes.
- We don't use heavy metals in pigments or stabilizers.
- We meet all applicable guidelines of the State of Wisconsin's progressive environmental and refuse laws.
- We recycle water used in the manufacturing process in a closed-loop system.
- We use recycled packaging for our products, containing up to 100% recycled content.

Our Products: Sustainability for the Long Haul

- Durability and outstanding quality provides a long life cycle, without the need to use new products.
- No waxing requirements means no environmental impact from waxing, and no damage caused by corrosive stripping.
- Most of our adhesives have zero to very low emissions of Volatile Organic Compounds (VOCs). (Please refer to our website for specific details.)

Our Standards: More than Just a Promise

Year after year, we maintain our commitment to strict eco-compatible manufacturing, packaging and recycling programs. Unlike others, we've made sure our compounds contain no asbestos, cadmium, CFCs, lead or formaldehyde. Simply, at VPI, giving customers eco-friendly options is our way of doing business.

Properties & Specs

Rubber Flooring Performance Properties

DECORATIVE SLATE, DECORATIVE HAMMERED, CLASSIC RAISED ROUND/SQUARE		
Gauge	0.125"	3.17 mm
Sizes	35 ³ / ₁₆ " x 35 ³ / ₁₆ "	905 mm x 905 mm
	17 ⁷ / ₁₆ " x 17 ⁷ / ₁₆ " Micro-Squared™	452 mm x 452 mm Micro-Squared™
Profiles & Colors	Decorative Slate	25 colors
	Decorative Hammered	20 colors
	Classic Raised Round	16 colors
	Classic Raised Square	16 colors
	Large Square	16 colors
	Deck Point	16 colors
ASTM F-1344 - Std Specification for Rubber Floor Tile	Exceeds Requirements	
ASTM E-648 / NFPA 253 - Fire Resistance	Class 1	
Critical Radiant Flux CRF (W/cm ²)	<1.10	
ASTM E-662 - Smoke Density	Class 1 ≤ 450	
ASTM E-84 - Fire Resistance (Steiner Tunnel)	Class 2	
New York State Fire Prevention Code	Filed in Compliance w/ Article 15, Part 1120	
New York City Fire Prevention Code	Accepted under Section 27-348	
ASTM D-3389 - Abrasion Resistance (H-18 500g @ 1,000 cycles)	0.5g	
ASTM D-2240 - Hardness	≥ 85 Shore A	
ASTM D-2047 - Static Coefficient of Friction	.54 (with specified conditioner) .67 (bare floor surface)	
ASTM F-970 - Static Load (modified)	Complies/Exceeds at 1,100 psi	
ASTM D-297 - Density	1.72 g/cc	
ASTM D-412 - Tensile	1,000 psi	
ASTM D-412 - Elongation	170%	
ASTM D-624 - Tear Die	190 lb/in	
ASTM F-925 - Chemical Resistance	Complies (Available on request)	
ASTM F-1515 - Light Aging	Better than ΔE = 8.0	
ASTM F-1514 - Heat Resistance	Better than ΔE = 8.0	
Adhesive VOC (Volatile Organic Content)	Very Low	
Limited Wear Warranty	10 Years	

DECORATIVE ROLLED		
Gauge	0.080" 0.118"	2 mm 3 mm
Size	60" x 50' approx. (1.5 m x 15.2 m) roll	
Profiles & Colors	Paper textured look; 20 colors	
Recycled Content	Recycled post-manufacturing decorative chips	
ASTM F-1859 - Rubber Sheet Flooring W/O Backing	Complies - Type 1	
ASTM E-648 - Critical Radiant Flux CRF (W/cm ²)	> 0.45 - Class 1	
ASTM E-662 - Smoke Density	≤ 450	
ASTM E-84 - Fire resistance (Steiner Tunnel)	Class 2	
ASTM D-3389 - Abrasion resistance	Exceeds Requirements	
ASTM F-970 - Static Load (modified)	Complies/Exceeds at 1,200 psi	
ASTM F-1515 - Light Aging	Complies	
ASTM F-1514 - Heat Aging	Complies	
ASTM D-2047 - Static Coefficient of Friction	Meets and Exceeds ADA Guidelines	
Limited Wear Warranty	10 years	
Maintenance	Wax Optional	

HARSH ENVIRONMENT		
Gauge	0.125" Stud Height: 0.020"	3.17 mm Stud Height: 0.5 mm
Sizes	35 ³ / ₁₆ " x 35 ³ / ₁₆ "	910 mm x 910 mm
	17 ⁷ / ₁₆ " x 17 ⁷ / ₁₆ " Micro-Squared™	454 mm x 454 mm Micro-Squared™
Profiles & Colors	Round Low Profile With Chamfered Edges - 16 colors	
ASTM D-471 - Oil & Grease Resistance	ASTM Oil #1: Excellent ASTM Oil #3: Excellent	
ASTM F-925 - Resistance to Chemicals	Excellent (Acids, Alkalis, Solvents)	
ASTM D-2240 - Hardness Shore A	≥85	
ASTM E-648 - Critical Radiant Flux	≥0.45	
ASTM E-84 - Fire Resistance	Class 1	
ASTM E-662 - Smoke Density	≤450	
ASTM D-3389 - Abrasion Resistance Taber Abrasion (H-22 Wheel @ 1000 Cycles / 1.0 Kg Load)	Exceeds Requirements	
ASTM D-2047 - Static Coefficient of Friction	Exceeds ADA Guidelines	
Cigarette Burn & Solder Resistance	Excellent	
Limited Wear Warranty	10 Years	
VOCs (Volatile Organic Content)	Very Low	
Stair Treads Available in 36", 48" and 72" Lengths		

Rubber Flooring Specifications

GENERAL

All VPI Rubber Flooring; Decorative Slate, Decorative Hammered, Classic Raised Round and Square shown on the finish schedule, or otherwise listed here within, shall be furnished by VPI Corporation, 3123 South 9th Street, Sheboygan, WI 53081. All VPI Rubber Flooring shall comply with ASTM F-1344 and meet Class 1 Fire Rating Standards as tested to ASTM E-648/ASTM E-662 and ASTM E-84, Class 2. All VPI Rubber Flooring shall be (specify: Decorative Slate, Decorative Hammered, Classic Raised Round and Square) profiles in 17⁷/₁₆" x 17⁷/₁₆" (452 mm x 452 mm) Micro-Squared™ or 35³/₁₆" x 35³/₁₆" (905 mm x 905 mm) sizes and 0.125" (3.17 mm) thickness in the color(s) specified.

All VPI Harsh Environment Flooring shown on the finish schedule, or otherwise listed here within, shall be furnished by VPI Corporation, 3123 South 9th Street, Sheboygan, WI 53081. All VPI Harsh Environment Flooring shall comply with ASTM F-1344 and meet Class 1 Fire Rating Standards as tested to ASTM E-84, ASTM E-648/ASTM E-662. All VPI Harsh Environment Flooring shall be (specify: Round) profile in 17⁷/₁₆" x 17⁷/₁₆" (454 mm x 454 mm) or 35³/₁₆" x 35³/₁₆" (910 mm x 910 mm) sizes and 0.125" (3.17 mm) thickness in the color(s) specified.

All VPI Decorative Rolled Rubber Flooring shown on the finish schedule, or otherwise listed here within, shall be furnished by VPI Corporation, 3123 South 9th Street, Sheboygan, WI 53081. All VPI Decorated Rolled Rubber Flooring shall comply with ASTM F-1859 and meet Class 1 Fire Rating Standards as tested to ASTM E-648/ASTM E-662 and ASTM E-84 Class 2. All VPI Decorative Rolled Rubber Flooring shall be 60" x 50' (1.5 m x 15.2 m) size and 0.080"/.118" (2.00 mm and 3.00 mm) thickness in the color(s) specified.

INSTALLATION & MAINTENANCE

All VPI Rubber Flooring, Decorative Slate, Decorative Hammered, Classic Raised Round and Square, Decorative Rolled Rubber and Harsh Environment must be installed in accordance with manufacturer's specifications, including subfloor preparation and recommended adhesive. Refer to "VPI Rubber Flooring Installation and Maintenance" for complete details. Copies can be obtained by calling 800-874-4240, at www.vpiflooring.com, or by writing: VPI Corporation, 3123 South 9th Street, P.O. Box 451, Sheboygan, WI 53082-0451.

Properties & Specs

Rubber Flooring Chemical Resistance Properties per ASTM F 925 Methodology

Chemical	Immersion Time	
	1 Minute	24 Hour
Betadine cleanser (povidone 7.5%)	No change	Slight change
Betadine solution (povidone 10%, iodine 1%)	Slight change	Stain
Coal tar (bitumen)	Slight stain	Stain
Household ammonia solution (5%)	No change	No change
Household bleach solution (5.25%)	No change	Whitening
Hydrochloric acid solution (5%)	Very slight discoloration	Discoloration
Iodine solution (tincture of iodine 2.5%)	Yellow stain	Yellow stain
Kerosene	Yellow stain	Slight Swelling
Olive oil (light)	No change	No change
Phenol (5%)	No change	No change
Phenox #6925 – 5% as recommended Phenolic germicidal detergent (o-phenyphenol 0.45% o-Benzyl-p-Chlorophenol 3.30%) (contains: 0.48% / 3.30%) Lalema	No change	No change
Phenox #6925 – pure solution 100% Phenolic germicidal detergent (o-phenyphenol 0.48% o-Benzyl-p-Chlorophenol 3.30%) (contains: 0.48% / 3.30%) Lalema	No change	No change
Polyquat #6750 – 1% as recommended Germicidal fungicidal virucidal detergent (Didecyl dimethyl ammonium chloride) (contains: 3.85%) Lalema	No change	No change
Polyquat #6750 pure solution 100% Germicidal fungicidal virucidal detergent (Didecyl dimethyl ammonium chloride) (contains: 3.85%) Lalema	No change	No change
Rubbing alcohol (70%)	No change	No change
Silver nitrate (normal)	Brown stain	Dark brown stain
Sodium Hydroxide solution (5%)	No change	No change
Sulfuric acid solution (5%)	Very slight discoloration	Discoloration
Unleaded gasoline (regular grade)	Slight swelling	Swelling
Wright's Blood Stain** - applied directly to floor	Blue Stain	Blue Stain
White mineral oil (medicinal grade)	No change	No change
White vinegar (5%)	No change	No change

Note: Tests have been done on #33 color gray compound. The results can vary for other colored products.

LEED CREDITS

The following Rubber Flooring contributes towards MR 4.1, 4.2
Recycled content:

Decorative Hammered/Slate Tile – 2% pre-consumer recycled content
Decorative Rolled Sheet – 2% pre-consumer recycled content

VPI Rubber Adhesives contributes towards IEQ Credit 4.1 – Low-emitting
Materials: ECO 560 adhesive (low VOC) & VPI #100 adhesives (0 VOC)
For more information visit us at www.vpiflooring.com.

Rubber Stair Treads and Stringer/Riser Combination Specifications

GENERAL

REFERENCES

- ASTM F-1344: Rubber Floor Tile
- ASTM E-648: Fire Resistance
- ASTM E-662: Smoke Density
- ASTM E-84: Flame Development
- ASTM D-3389: Abrasion Resistance

WARRANTY

- Provide manufacturer's warranty under provisions of Section [01700.] [01740.]
- Warranty: Include a 10-year warranty that products are free from defects in materials and workmanship.

PRODUCTS

ACCEPTABLE MANUFACTURERS

- VPI Corporation, 3123 South 9th Street, Sheboygan, WI 53081

FLOOR COVERING MATERIALS

- Rubber Stair Treads: [ASTM F-1344] [VPI Rubber Decorative and Classic Stair Treads] [VPI Rubber Classic Stair Treads for Harsh Environments] [VPI Rubber Decorative and Classic Stair Treads for the Visually Impaired] [VPI Rubber Harsh Environment Stair Treads for the Visually Impaired]; [One-Piece, Round Profile][Regular, Round Profile] [Regular, Square Profile]; [19%" by 36, 48 or 72"] [12¾" by 36, 48 or 72"] by 0.138" thick; color [selected.]
- VPI Rubber Stringer/Riser Combination; 10¼" x 24" with a 3/8" toe by 0.081" thick; color [selected].

MANUFACTURING TOLERANCES

- Precision control gauge to assure consistent surface with no high edges.

ADHESIVES

- Flooring Adhesives: [VPI No. 560 Acrylic Adhesive] [VPI No. 100 Solvent Free 2pt. Epoxy Adhesive] as required for specific use.

EXECUTION

EXAMINATION

Consult with manufacturer Installation & Maintenance Instructions for flooring preparation, and Floor Preparation Guide for precautions when substrate is lightweight aggregate concrete, magnesite flooring, or for below-grade conditions.

- Verify that concrete sub floors on- or below-grade are installed over a suitable moisture retardant membrane.
- Ensure concrete floors are dry and exhibit alkalinity levels between 5 & 8 pH with adequate carbonization and no dusting. Maximum moisture emission: 3 lbs./1,000 sq. ft./24 hours. Moisture tests are recommended.
- Ensure floor surfaces are smooth and flat with maximum variation of ¼ inch in 10 feet.
- Ensure floor surfaces are clean and free from dust, paint, oil, grease, curing agents, parting compounds, surface hardeners, sealers, solvents, old adhesives and other extraneous substances.
- Beginning of installation means acceptance of surface and conditions.

INSTALLATION

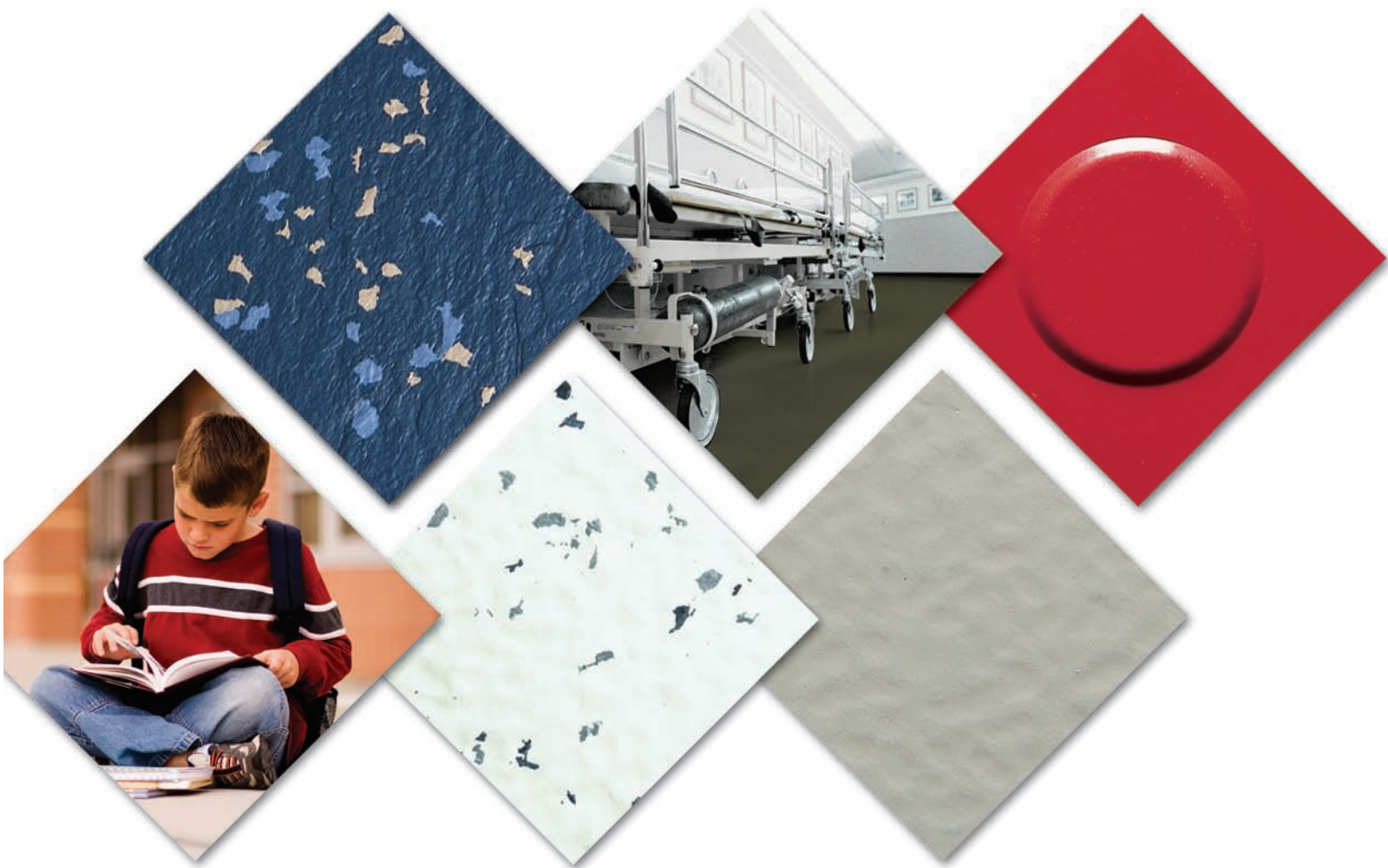
- Install stair treads in accordance with manufacturer's printed instructions.
- Use adhesive recommended by floor tile manufacturer.

PROTECTION

- Prohibit traffic on finished floor for 48 hours after installation.

CLEANING

- Remove excess adhesive from floor, base and wall surfaces without damage, while adhesive is still wet.
- Clean stair treads and stringer/riser in accordance with manufacturer's instructions.



Product Standards That Lead the Industry



For more information visit us at www.vpiflooring.com
Contact us at **800-874-4240** or email floor@vpicorp.com

VPI Corporation
3123 South 9th Street, P.O. Box 451, Sheboygan, WI 53082-0451
Phone: 920-458-4664 Fax: 920-458-1368